

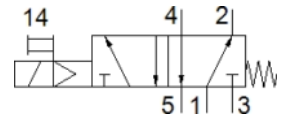
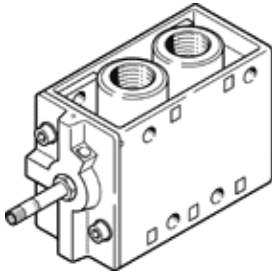
Solenoid valve

MFH-5-1/2

Part number: 6420

FESTO

With manual override, without solenoid coil or socket. Solenoid coil and socket should be ordered separately.



Data sheet

Feature	values
Valve function	5/2 monostable
Type of actuation	electrical
Standard nominal flow rate	3,700 l/min
Operating pressure	2 ... 8 bar
Design structure	Poppet seat
Type of reset	mechanical spring
Protection class	IP65
Nominal size	14 mm
Grid dimension	69 mm
Exhaust-air function	throttleable
Sealing principle	soft
Assembly position	Any
Manual override	detenting
Type of piloting	Piloted
Flow direction	non reversible
Switching time off	154 ms
Switching time on	15 ms
Operating medium	Compressed air in accordance with ISO8573-1:2010 [7:4:4]
Note on operating and pilot medium	Lubricated operation possible (subsequently required for further operation)
Medium temperature	-10 ... 60 °C
Ambient temperature	-5 ... 40 °C
Product weight	1,135 g
Electrical connection	Via F coil, must be ordered separately
Mounting type	on manifold rail with through hole Optional
Pilot exhaust port 84	M5
Pneumatic connection, port 1	G1/2
Pneumatic connection, port 2	G1/2
Pneumatic connection, port 3	G1/2
Pneumatic connection, port 4	G1/2
Pneumatic connection, port 5	G1/2
Materials note	Conforms to RoHS
Materials information for seals	NBR
Materials information, housing	Aluminium die cast