

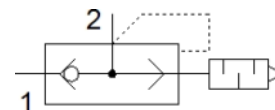
Quick exhaust valve SEU-1/8

Part number: 4616

FESTO

The exhaust noise level is measured at 6 bar to atmosphere at 1 m distance.

With built-in silencer.



Data sheet

Feature	values
Valve function	Quick exhaust
Pneumatic connection, port 1	G1/8
Pneumatic connection, port 2	G1/8
Mounting type	Threaded
Standard nominal flow rate, exhaust	550 l/min
Standard flow rate for exhaust 6->0 bar	1,000 l/min
Standard nominal flow rate for pressurisation 6->5 bar	300 l/min
Operating pressure	0.5 ... 10 bar
Ambient temperature	-20 ... 75 °C
Materials information, housing	Zinc die-casting
Operating medium	Compressed air in accordance with ISO8573-1:2010 [7:4:4]
Nominal size	5 mm
Assembly position	Any
Note on operating and pilot medium	Lubricated operation possible (subsequently required for further operation)
Medium temperature	-20 ... 75 °C
Sound pressure level	85 dB(A)
Product weight	65 g
Materials information for seals	NBR