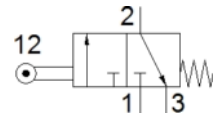
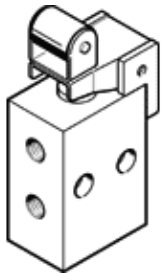


# Roller lever valve R-3-M5

Part number: 3629

**FESTO**

This type is suitable for vacuum.



## Data sheet

Feature	values
Valve function	3/2 closed, monostable
Type of actuation	mechanical
Standard nominal flow rate	80 l/min
Operating pressure	-0.95 ... 8 bar
Design structure	Piston seat
Nominal size	2 mm
Type of piloting	direct
Operating medium	Compressed air in accordance with ISO8573-1:2010 [-:-:-]
Ambient temperature	-10 ... 60 °C
Actuating force	16.5 N
Product weight	40 g
Mounting type	with through hole
Pneumatic connection, port 1	M5
Pneumatic connection, port 2	M5
Materials information for seals	NBR
Materials information, housing	Zinc die-casting